



Introduction

The story is set in Tokyo and the year is 2037A.D. A biologically-engineered cyborg escapes from the place that he was created in after realising that his purpose was to be used as a weapon to do dirty work for the highest bidder. While investigating his origin and how he became what he is, he finds out that the power that was used to create him came from a mutated superhuman who has the ability to generate energy.

Finding out that the mutant was being held captive against her will, the cyborg sets off on a mission to rescue her and put an end to the creation of human weapons like himself. However, to save her, he must go against the mastermind of it all, a high-rank military general who is ruthless and will stop at nothing to get his way.

Protagonist (Eli)



Protagonist (Eli)

1st Character

Hero

Half cyborg

Robotic hand/Half robotic body

An experimented on

Angry

Lost

Doesnt know his purpose

Why he was created?

Who created him?

Whatever created him seems to be calling him

Metal body/Future kind of soldier

Weaponised cyborg

Was a soldier in the army before the experiment

Disciplined

Loyal to his country

Brave

Heroic

Angry

Tall

Fit

Around 30+ years old

Robotic arm

Half robot face/gear

Lower half of body is robotic

Helmet/Head gear

Design based on Japanese samurai

Protagonist (Eli)

Outline



Protagonist (Eli)

Greyscale



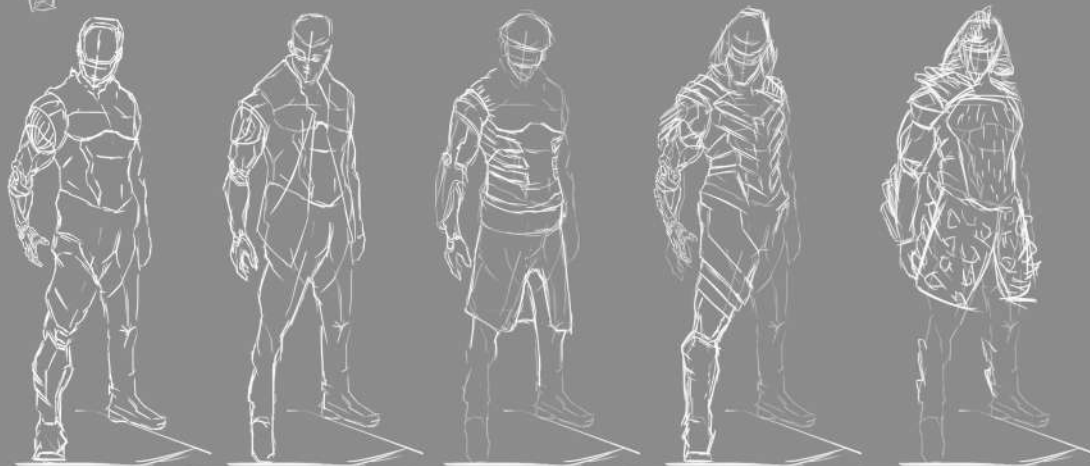
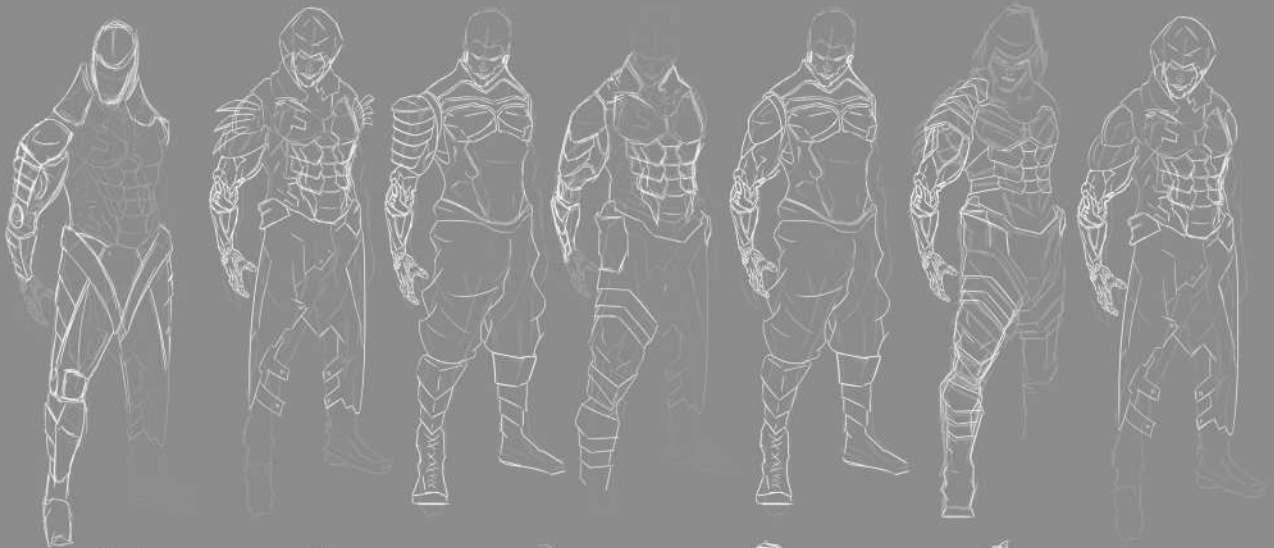
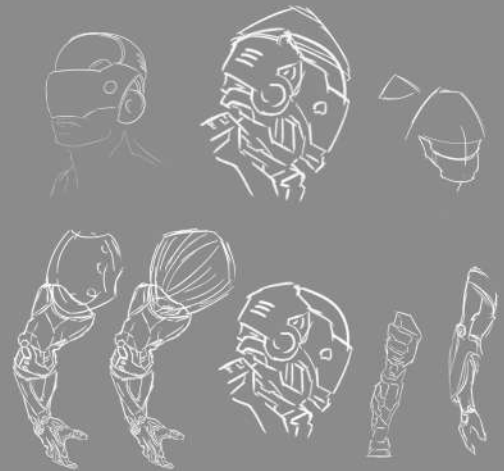
Protagonist (Eli)

Color Matching



Protagonist (Eli)

Design Idea & Sketches



Protagonist (Eli)

References



Antagonist (General Takeshi Satoru)



Antagonist (General Takeshi Satoru)

2nd Character

Villain

Military general

Serious

Intelligent

Powerful

Immoral

(to fight an enemy)

Determined

(creating a weapon that would make them powerful)

High-ranked military general

Greedy

Cunning

Ruthless

Powerful

Muscular but has a pot belly

50+ years old

White streaks in hair

Has beard

Short

Asian

Design based on yukata

Antagonist (General Takeshi Satoru)

Outline



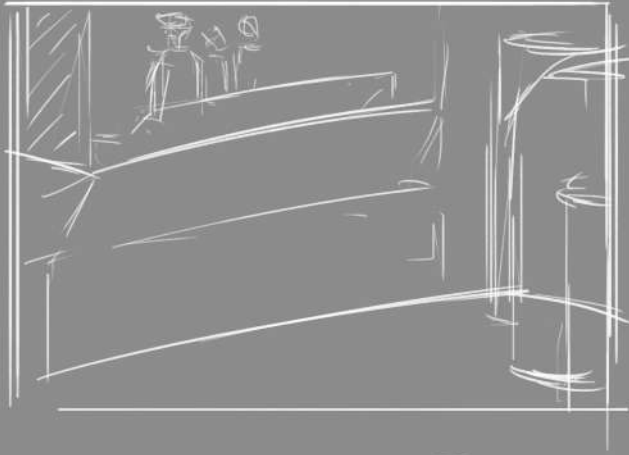
Antagonist (General Takeshi Satoru)

Greyscale



Antagonist (General Takeshi Satoru)

Design Idea & Sketches & References



Side Character/Companion (Hiryu)



Side Character/Companion (Hiryu)

3rd Character

Companion/Victim

Female

Asian/Japanese

Mutated superhuman

Generates energy

Weak

Doesnt control her special powers

Being used to create human cyborgs

Captured/Imprisoned

Attractive

Mutated superhuman

Has the ability to generate energy

Peaceful

Dislikes violence

Petite

Long hair

Asian

Glowing eyes

White hair

Aged early 20s

Design based on geisha

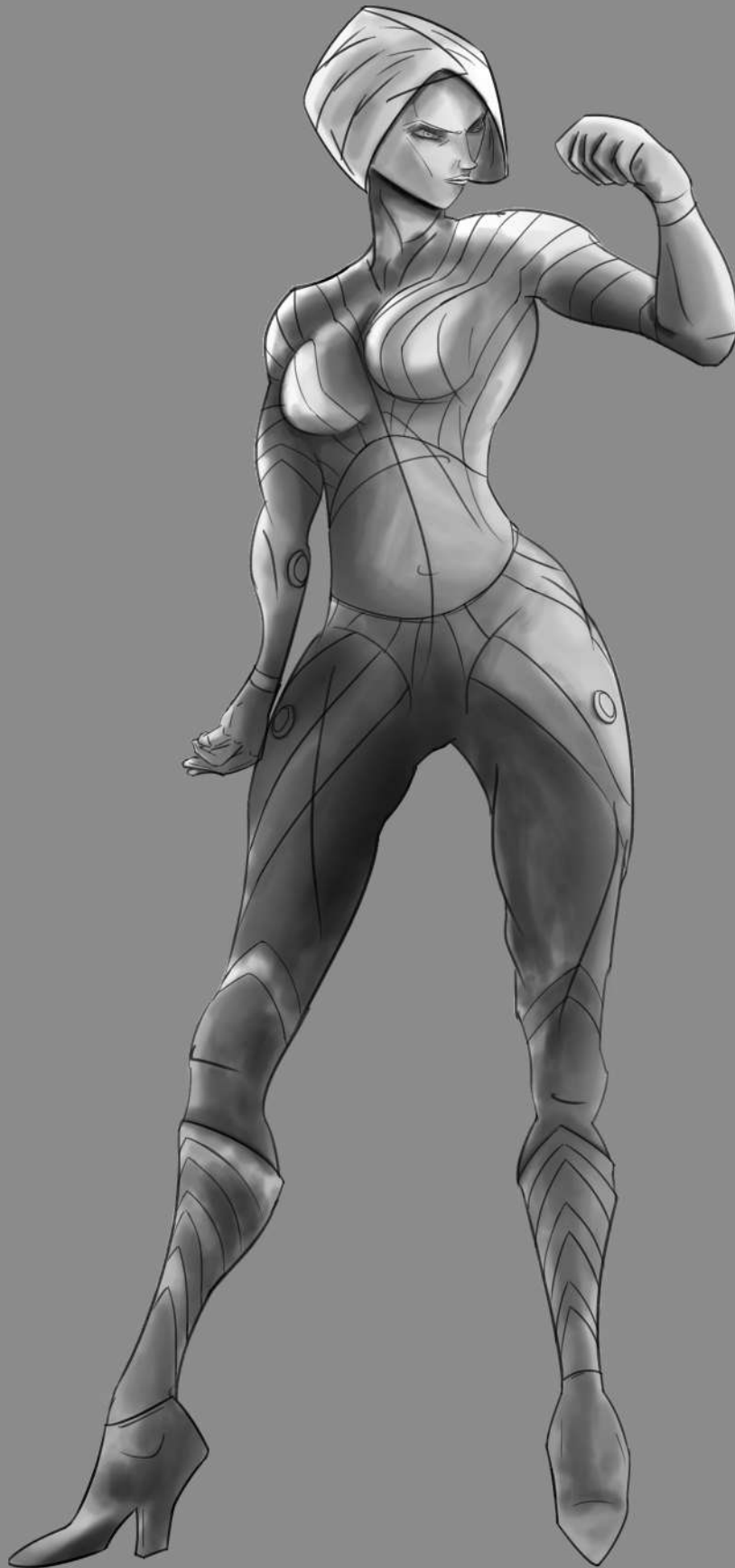
Side Character/Companion (Hiryu)

Outline



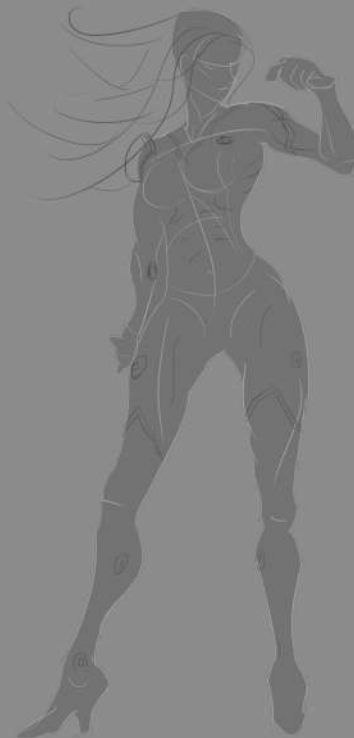
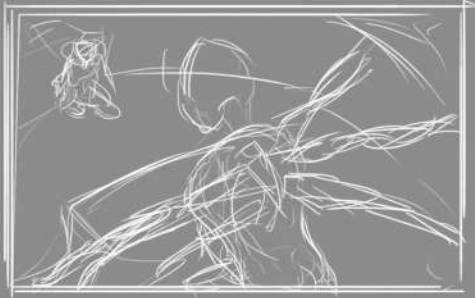
Side Character/Companion (Hiryu)

Greyscale



Side Character/Companion (Hiryu)

Design Idea & Sketches & References



Interior (Laboratory)

Final Desgin



Greyscale



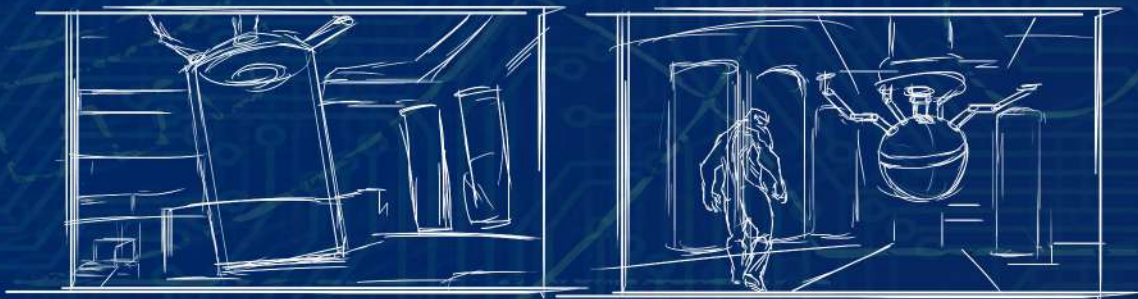
Interior (Laboratory)

A large futuristic laboratory room with an energy absorbing machine in the centre.

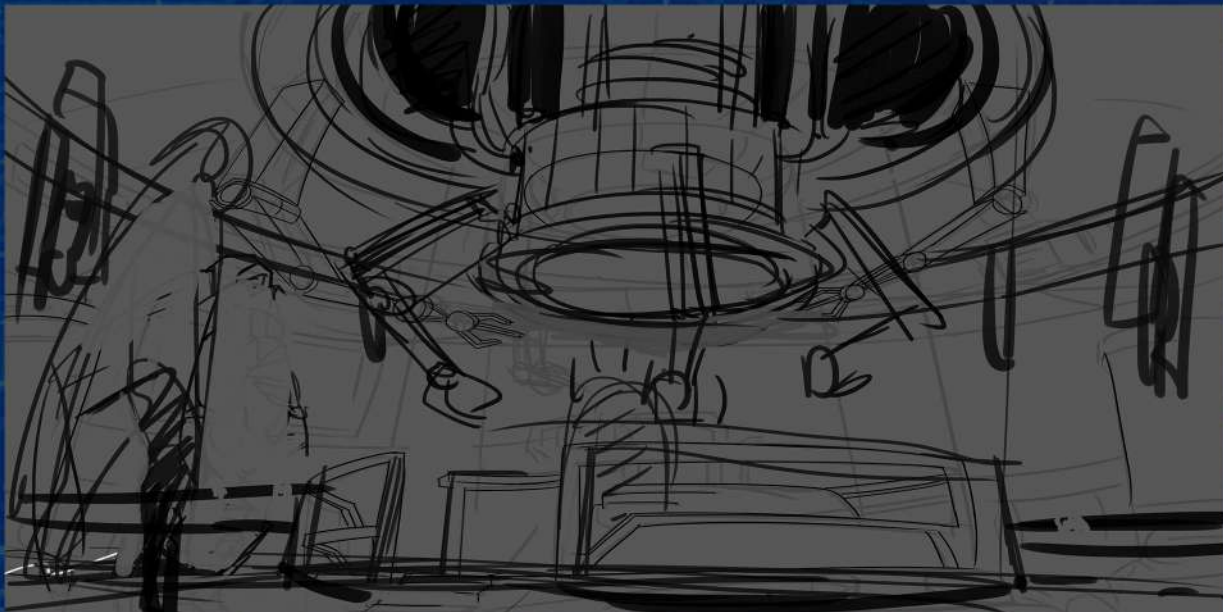
The mutant girl is attached to the machine and energy from her is being transferred to pods attached to the walls of the lab containing human experiments.

The design is based on Japanese homes.

Desgin Idea



Rough Outline



Exterior (Secret Bunker Hidden in Temple)

Final Desgin



Greyscale



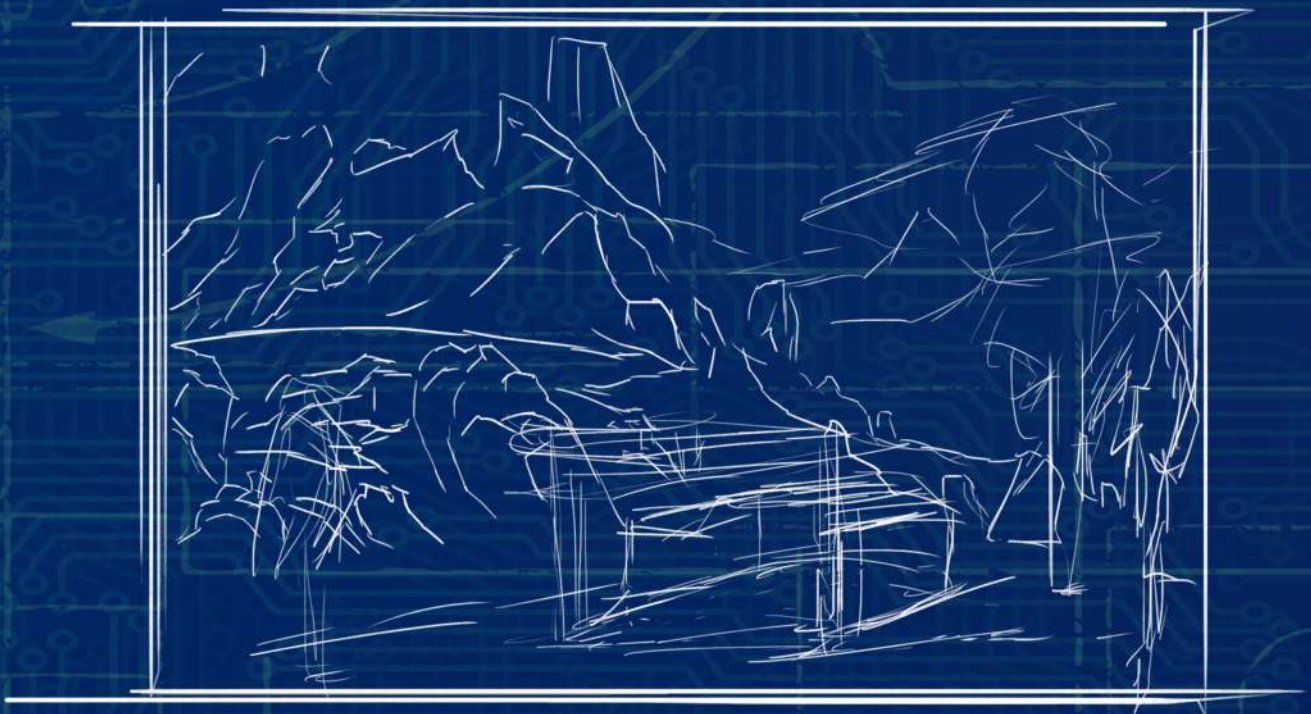
Exterior (Secret Bunker Hidden in Temple)

A military bunker-like building made of steel at the base of a snowy mountain. It is surrounded by pine trees and hidden by the snow storm.

The entrance is on the surface but the rest of the bunker is underground.

The design is based on Japanese shrines.

Design Idea & Sketches





Hassan Obiad
1405101
DG1505-3

